

**Package fresh food easily, quickly and efficiently, optionally also with MAP or skin technology: Our semi-automatic tray sealer TPE10 makes your work easier, for instance through mold change without the need of other tools. Use the TPE10 as needed for a wide variety of packaging types and materials. An individual retail solution for maximum flexibility which requires minimal space.**



**More information**  
High performance  
with a wide range of  
solutions and options.

### Product description

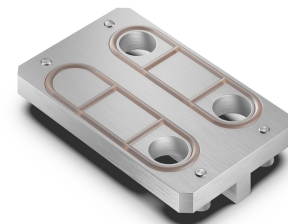
With the TPE10 tray sealer, a wide variety of packages can be sealed easily and quickly - for optimum freshness and longer shelf life. The TPE10 integrates common packaging technologies. Depending on configuration and equipment it is suitable for tray sealing, MAP (modified atmosphere packaging) or even skin packs. Packaging of products protruding the tray edge gives you more options. Easy mold changes make you flexible to respond quickly to changing requirements in terms of packaging types or sizes. Assortments in the refrigerated display case can be adapted to actual demand. With an optional heatable mold holder trolley, molds and tray holders can be easily removed, replaced and stored. The compact, mobile version of the TPE10 ensures easy equipment placement in the preparation room. An integrated compressor reduces the installation effort.



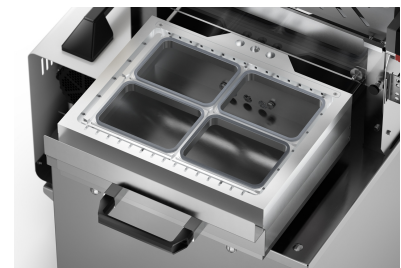
TPE10

### Highlights

- Wide range of applications and maximum flexibility for packaging types with interchangeable mold and tray holders
- Supports MAP and skin packs - with a single device
- Universal sealing mold:
  - Processing of a wide range of tray sizes with the same mold through easy tray holder change
  - MAP and skin packs can be processed using a quick-change adapter in a single tray holder
- Packaging-specific sealing molds:
  - Automatic film cutting at the tray edge
  - Therefore higher throughput and less effort
- Tool-free tray holder change
- Optional laterally mounted air compressor
- Compact, mobile design
- 7" color touch screen for easy programming and operation of the device



Quick-change adapter



Tray holder for universal mold

### Options

- Supports MAP, skin packs and cardboard trays with protrusion
- Laterally mounted air compressor for certain skin pack applications
- Most different molds and tray holders
- Automatic or manual film cutting at the tray edge
- Network connection (e.g. for remote support)

---

**My Bizerba**

We offer you solutions from a single source which can be customized and allow you to respond to any change in a flexible manner. Benefit from costs which can be planned and efficient processes. We are happy to advise you.

**Bizerba SE & Co. KG**  
Wilhelm-Kraut-Straße 65  
72336 Balingen

T +49 7433 12-0  
fax: +49 7433 12-2696  
marketing@bizerba.com

**[www.bizerba.com](http://www.bizerba.com)**